

Finish Projects Faster with our

Expanded Inventory

in-stock & ready to ship today!

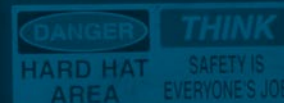
We've added thousands of relays, enclosures, industrial sensors, connectors and circuit protection products.

[See Deals Inside](#)



Your one-stop source for Industrial Automation

- Authorized electronics distributor with 500+ top brands
- Serving engineers for 80 years
- Broadest selection for Industrial Applications
- Custom Enclosures - standard modifications or customization at newark.com/custom-enclosures



Learn more at newark.com/automation

Order online at newark.com or call 1.800.463.9275

HOW MAY WE HELP YOU TODAY?

Website
newark.com

Community
element14.com

Email
order@newark.com
quote@newark.com

Phone
1.800.463.9275
M-F 7:00 AM – 8:00 PM (EST)

Fax
1.888.551.4801

eProcurement Systems
We can link with any eProcurement system and our dedicated e-team will facilitate your implementation.
email: eproc@newark.com

Same-Day Shipping
newark.com/shipping
Domestic: Order M-F by 9:30 PM (EST)
Export: Order M-F by 6:00 PM (EST)
In-stock products normally ship the same day

No Minimum Order Fees



You Can Find Us at...

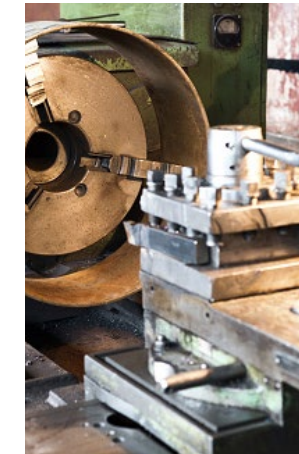


Features of the Month!



Engineered for Extremes

Depend on TE Connectivity for rugged, reliable real-world solutions designed to withstand conditions in harsh environments. Find out more at newark.com/te-connectivity-harsh-environment-solutions



Extreme Protection & Performance For Extreme Environment Applications

Whether it's extreme heat, blistering winds, or toxic chemicals - electronics are more susceptible to damage when operating in harsh environments.

Engineers must account for environmental factors before the design stage, choosing products with proper qualifications and ratings to protect valuable equipment and personnel.

Newark element14 offers a broad portfolio of products and components designed to withstand extreme environments. Visit newark.com/applications-harsh-environments to learn more!

Stockroom Solutions

Call 1-800-463-9275 to schedule a FREE demo today!

Newark element14 can help you manage inventory and order fulfillment by providing the best price options, reduced inventory costs and streamlined information management.

Learn more at newark.com/stockroom-solutions



Achieve complete Spending control with our FREE eProcurement tool, iBuy. Visit newark.com/ibuy to find out more about how we can help provide you a more efficient purchasing process.



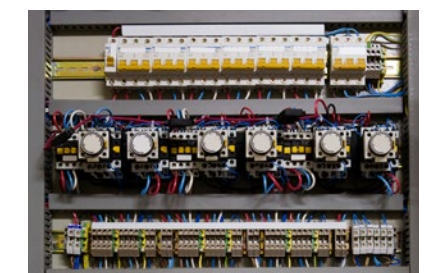
We've Lowered Pricing on Over 300 Fluke Products!

Start saving and see how you can get up to \$3,000 in FREE GIFTS for you and your crew. Visit newark.com/flukespecialofferstest today!



Optimize the Process

Save time and space with Eaton's control panel design guide. Visit newark.com/eaton-control-panel-design-solutions



TAKE CONTROL

with Products that Keep You Up and Running

Wire and Cable



Over 23,000 products
From more than 20 top brands including:
 Alpha
 Belden
 Panduit
 3M

Controllers – PLC



Over 600 products
From 11 top brands including:
 Omron
 Eaton
 Opto 22
 Schneider Electric

Controllers – Process



Over 1,400 products
From 29 top brands including:
 Eaton
 IDEC
 Omron
 Schneider Electric

HMI



Over 200 products
From 17 top brands including:
 IDEC
 Omron
 Red Lion
 Schneider Electric

Relays – Contactors Electromechanical Solid State & Time Delay



Over 8,500 products
From 64 top brands including:
 Crydom
 Eaton
 Omron
 Schneider Electric
 TE Connectivity

Motor Controls



Over 1,900 products
From 28 top brands including:
 Eaton
 Omron
 Schneider Electric

Enclosures



Over 3,600 products
From more than 18 top brands including:
 Bud
 Hammond
 Hoffman

Sensors



Over 1,500 products
From 32 top brands including:
 IDEC
 Banner
 Omron
 Turck

Circuit Breakers



Over 2,600 products
From 15 top brands including:
 ABB
 Airpax
 Schneider Electric
 Eaton

Switches – Rocker Selector & Toggle



Over 6,000 products
From 39 top brands including:
 Eaton
 Honeywell
 Omron
 Schneider Electric

Switches – Pushbutton



Over 3,800 products
From 48 top brands including:
 EAO
 IDEC
 Eaton
 Schneider

Switches – Estop

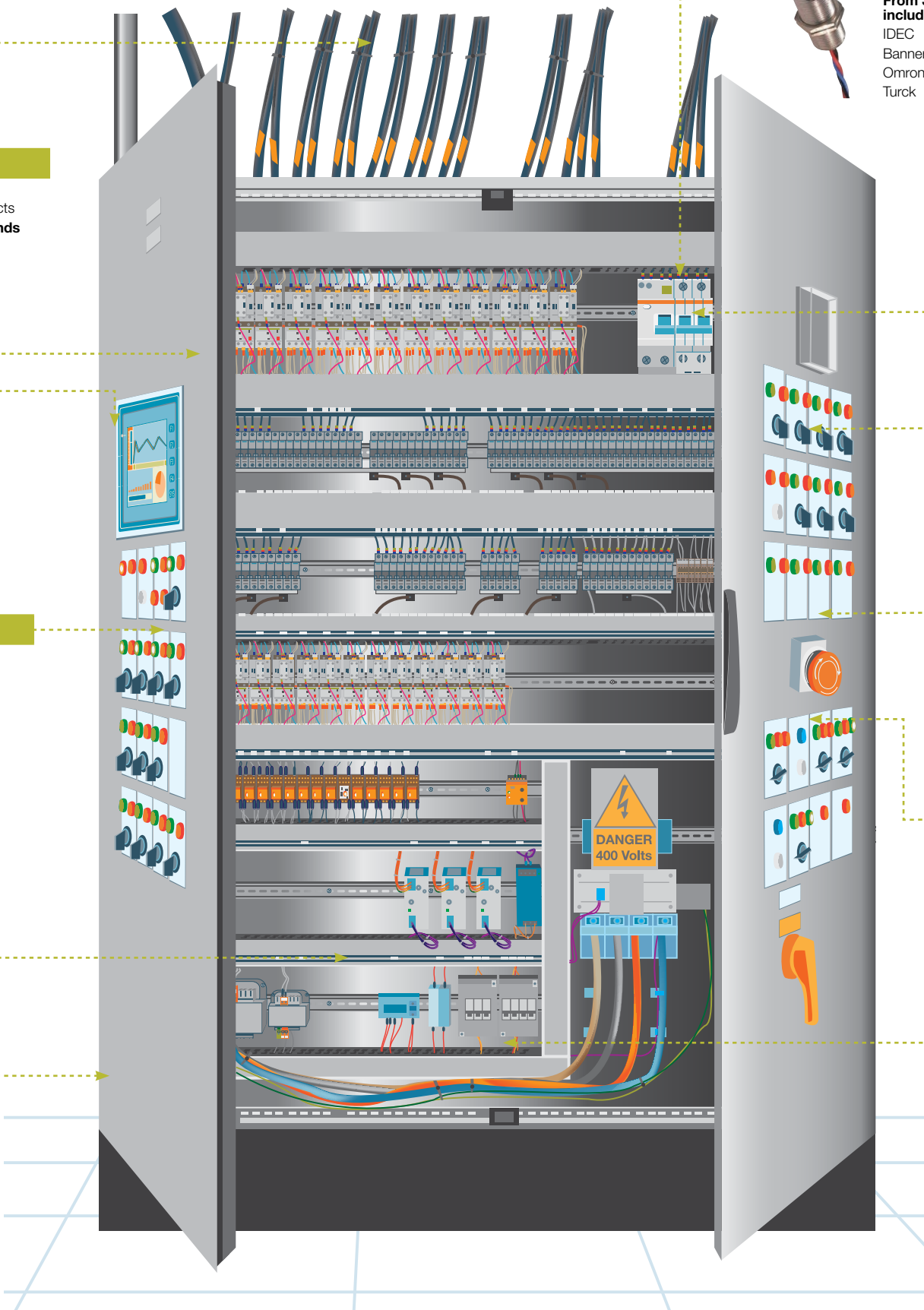


Over 520 products
From 21 top brands including:
 IDEC
 Schneider Electric
 EAO

Power



Over 6,000 products
From more than 30 top brands including:
 Emerson
 Sola HD
 TDK Lambda
 XP Power





element14

newark.com | 1 800 463 9725



Your

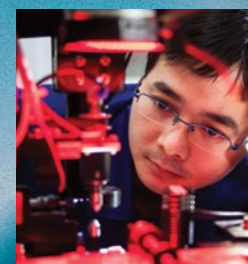
DEVELOPMENT DISTRIBUTOR

Supporting your journey at every stage

Visit:
newark.com/your-development-distributor



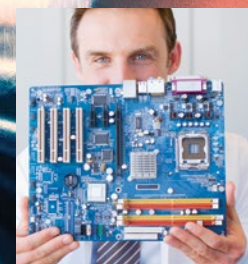
EDUCATION
& MAKERS



RESEARCH
& DESIGN



PROTOTYPE
& TEST



PRODUCTION
& MAINTENANCE

KEMET C27 Series Motor Run Capacitors

- Rugged capacitor used in series to the start-winding of single phase motors
- Main application: air-fans, pumps, circulators, and electric motors



Starting at
SKU: 67R8899 **1.28**

VISHAY HOTCap™ Ceramic Capacitors

- High operating temperature radial leaded multilayer ceramic capacitors
- Built for the most extreme automotive operating conditions
- Defines a new standard for performance and reliability



Starting at
SKU: 84Y5924 **0.09**

CDP CORNELL DUBILIER Snap-In Aluminum Electrolytic Capacitors

- Great value snap-in series for 85°C and 105°C long-life operation
- A cost-effective choice for DC filtering
- Features long-life and high-ripple capability



Starting at
SKU: 97M5306 **1.11**

BOURNS SRN Series Shielded SMD Power Inductors

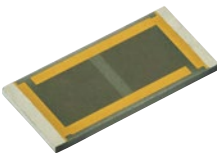
- Ideal for automotive infotainment systems
- Features high saturation current and shielded construction
- AEC-Q200 qualified



Starting at
SKU: 05AC0167 **0.19**

VISHAY PCAN Series High-Power Thin Film Resistors

- Four times the power handling capability of commercial chip resistors
- Ideal for use in power supplies for industrial & telecom applications
- Highly stable for extended periods over time and temperature



Starting at
SKU: 49Y7566 **2.15**

KEMET Radial Leaded Ceramic Disc Capacitors, C900 Series

- High reliability, high temperature
- Offers excellent reliability at temperatures of up to 125°C
- Perfect for antenna coupling and filtering



Starting at
SKU: 96Y7462 **0.07**

AVX SCC & SCM Series SuperCapacitors

- Double-layer capacitors, offering excellent pulse power handling
- Very high capacitance and very low ESR
- Cylindrical & connected modules



Starting at
SKU: 10AC9069 **0.49**

TDK SPM-LR SMD Power Inductors

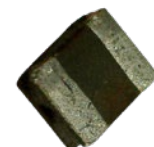
- Wound magnetic material achieves large current, low Rdc, and compactness
- Structure features an integrated molded coil
- Low inductance variance in high-temperature environments



Starting at
SKU: 84Y6550 **0.77**

TDK Shielded SMD Power Inductors

- Small size & low profile
- High magnetic shield construction
- For mobile communications, consumer electronics, LCD displays & HDDs



Starting at
SKU: 22AC4937 **0.18**

Littelfuse Comprehensive Line of Varistors

- Rugged and reliable over-voltage protection
- Many form factor and protection ranges available
- High surge capability



Starting at
SKU: 58K7575 **0.13**

VISHAY 159 PUL-SI Series Extended to 500V@5000h

- Ultra long life, snap-in aluminum electrolytic capacitors
- High ripple current capability and robust design
- Check out all our additional values



Starting at
SKU: 02AC2911 **3.89**

Panasonic SP-Cap/Specialty Polymer Aluminum Capacitors

- Low ESR
- Excellent noise-absorbent characteristics
- Perfect solution for input and output capacitor for various DC/DC converters



Starting at
SKU: 54W2542 **0.92**

BOURNS SRP Series Automotive Grade Power Inductors

- Features high saturation current and shielded construction
- Manufactured with a metal powder core
- AEC-Q200 qualified



Starting at
SKU: 58Y3761 **2.02**

OHMITE 270 Series Vitreous Enamel Power Resistors

- For applications requiring up to 1000watts of power
- Featuring a rugged enamel, flame resistant coating
- All-welded construction



Starting at
SKU: 02F2292 **4.58**

multicomp Surface Mount MELF Resistors

- Excellent all-around stability
- Extremely low ESR
- Ideal applications: automotive, telecom and medical



Starting at
SKU: 27W1044 **0.03**

Tektronix 5 Series MSO Oscilloscopes

- 15.6" HD touchscreen display with 4, 6 or 8 channel models
- FlexChannel(TM) technology provides unprecedented flexibility
- Unmatched visibility into complex embedded systems



Starting at
SKU: 17AC9283 **12600.00**

KEYSIGHT TECHNOLOGIES 1000X Series Oscilloscopes

- 7" WVGA display
- 2 analogue channels and 1 digital channel
- Built-in USB host and USB device ports make PC connectivity easy
- Maximum sample rate is 2GSa/s



Starting at
SKU: 06AC0353 **647.00**

FLUKE 729 Automatic Pressure Calibrator

- Portable automatic pressure calibrator simplifies pressure calibration
- Easily document the process using onboard test templates
- Automatic internal fine-pressure adjustment
- Measure, source and simulate 4 to 20 mA signals



Starting at
SKU: 15AC9665 **8699.99**

FLIR ETS320™ Thermal Imaging System

- 320 x 240 pixel infrared detector
- Quantifies heat generation and thermal dissipation up to 250°C
- Specifically designed for hands-free testing on electronics



Starting at
SKU: 14AC2256 **2499.00**

LOCTITE Loctite Hybrid Structural Adhesive

- Excellent adhesion to metals, composites, wood materials and plastics
- Ready-to-use and can be dispensed directly from the pack
- Fast fixture at room temperature



Starting at
SKU: 24AC4327 **8.55**

Tektronix TTR500 Series Vector Network Analyzer

- Full 2-port 2-path S-parameter measurements
- Complete vector network analysis capability
- Built-in bias tee accessible on both ports to bias active devices
- Offline simulation mode for analysis of S-parameter files



Starting at
SKU: 16AC8523 **9000.00**

KEYSIGHT TECHNOLOGIES E36300 Series Triple Output Power Supplies

- Low noise power and excellent regulation
- Overvoltage and over-current load protection
- Front and rear output terminals



Starting at
SKU: 15AC9653 **1100.00**

FLUKE 64 MAX IR Thermometer

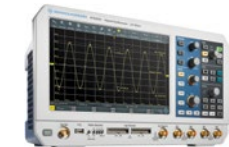
- 20:1 Distance to spot for better temperature accuracy
- 99 data point logging
- 30 hour battery life



Starting at
SKU: 15AC9670 **199.99**

ROHDE & SCHWARZ RTB2000 Series Oscilloscopes

- 10Msamples standard and 20Msamples interleaved, 50000 waveforms/s update rate
- Offers outstanding sensitivity
- 10.1" high resolution 1280 x 800 pixel capacitive touchscreen



Starting at
SKU: 11AC0568 **1370.00**

MEYCAL VFX-1000 Volume Fume Extraction System

- Simple way to manage the risks to employees and your organization
- System features a smaller footprint than the MFX series
- Remote control included, blower with high airflow and speed control



Starting at
SKU: 24AC0850 **3200.00**

Tektronix TBS2000 Series Oscilloscopes

- 9" WVGA display
- Make measurements easily, and with confidence
- 15 horizontal grids show 50% more signal



Starting at
SKU: 85Y2795 **1200.00**

KEYSIGHT TECHNOLOGIES Fieldfox Handheld RF and Microwave Analyzers

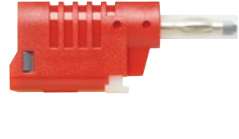
- Real-time spectrum analysis
- Rugged enough to meet MIL-specs



Starting at
SKU: 46P5209 **8309.00**

Pomona New! Quick Connection Banana Plugs and Jacks

- Five new lines of do-it-yourself connector
- Easy cable assembly and quick wire attachments up to 18 AWG wire gauges
- No need for soldering or set screwing wires to the connectors.



Starting at
SKU: 25AC2368 **8.99**

KLEIN TOOLS Heavy-Duty Wire Stripper

- Forged steel makes this 4 times stronger than other wire strippers
- Strips 10AWG to 18AWG
- Twist up to three wires at a time
- Induction hardened cutting knives for long life



Starting at
SKU: 22AC7891 **33.71**

MEYCAL CV-5210 Connection Validation Soldering Station

- SmartHeat Power on demand technology
- Patented connection validation IMC formation technology
- 2.8" color touchscreen with bold graphics
- Precise tip temperature display



Starting at
SKU: 13AC7485 **799.00**

3M Mini D Ribbon Wire Mount Plugs

- Accepts a wide variety of shielded junction shells
- Nickel-plated steel shroud
- Accommodates 28AWG stranded and 30AWG solid wire



Starting at
SKU: 52F7594.....**5.46**

Amphenol Aerospace Amphenol 2M 38999 Circular Connectors

- Designed and tested to MIL-spec standards
- 71% in weight savings compared to MIL-DTL-38999
- 52% smaller than MIL-DTL-38999



Starting at
SKU: 12X3346.....**158.62**

Amphenol FCI FFC / FPC 1.0mm Board Connector - HLW Series

- Economical connector system offered in both LIF and ZIF options
- Surface mount and through hole terminations in contact options to 0.2mm
- Best solution for terminating displays and making hard BtB connections



Starting at
SKU: 62K4631.....**0.08**

Amphenol RF MCX Right Angle Crimp Plug

- Right-angle configuration
- Fits RG-174, RG-188, RG-316
- 50 ohm



Starting at
SKU: 94Y5244.....**2.07**

BELDEN SpaceMaker™ Series Electronic Cables

- Up to 52% reduced cable area
- Reduced size with increased flexibility along with 74% tighter bend radius
- Increased cable life with 1 million flex life cycle
- Simplifies installation and reduce maintenance cost



Starting at
SKU: 01AC6493.....**43.92**

ABB SNK Series Terminal Blocks and Accessories

- Reduced effort and conductor preparation time with spring mode
- 50% faster connection time with push-in mode
- Shock and vibration proof



Starting at
SKU: 65Y9817.....**1.78**

Amphenol Industrial Max-M12 Series

- Based on the IEC 61076-2-101 and SAE J 2839 standards
- 90° right angle and straight connector offerings
- 3, 4, and 5 way circuit patterns
- Terminals for solder to wire or pins for PCB applications



Starting at
SKU: 39X7428.....**17.89**

Amphenol Pcd Small, Reliable, & Cost-Effective Luminus Series Connector

- 1/4 turn bayonet type, makes wire installation/maintenance easy & efficient
- Interfacial & triple-barrier seal enables environmental sealing (IP67)
- Multiple keying positions ensure proper connectivity
- Many configurations & accessories, tailored solutions to meet custom needs



Starting at
SKU: 11R8529.....**13.83**

INDUSTRIAL AMPHENOL Ecomate Circular Connectors

- Ergonomically designed IP67 connectors with a superior grip promotes safer handling
- Fastening for protective caps on the receptacle housing
- One cable housing for all cable diameters



Starting at
SKU: 81K1476.....**7.12**

BELDEN RF/Coaxial Connector

- Non-plenum, BNC straight plug, crimp, 75 Ohm



Starting at
SKU: 52T2625.....**75.15**

AlphaWire Alpha Connect High-Performance Connectivity

- Ensures safe and reliable communication in industrial environments
- End-to-end solution for connecting sensors and actuators
- Decrease downtime and increase productivity



Starting at
SKU: 01AC3112.....**14.86**

Amphenol ICC Rugged IP68 RJ45 Connectors - MRJR Series

- Standard RJ interface for Ethernet/IP protocol in harsh environments
- Right angle PCB tail termination with 8 or 10 positions
- LED options, EMI ferrite filtering and optional dust covers available



Starting at
SKU: 49X2708.....**20.29**

Amphenol RF RF/Coaxial Connector

- HD BNC straight plug, Belden 4794r, 75 ohm, phosphor bronze
- Package of 10



Starting at
SKU: 14AC0465.....**6.75**

ASTRO TOOL CORP. MIL-Spec Connector Tools and Accessories

- Go/NoGo gauge for use with ASTRO AFM8 miniature adjustable crimp tools
- Made in the USA
- A wide selection of Astro Tools in stock



Starting at
SKU: 94Y5377.....**68.52**

BELDEN Belden® DataTuff® Industrial Ethernet Connectivity

- Cord Sets (RJ45) Cat 6 or Cat 5e UTP or FTP
- Solid 24 AWG conductors & industrial-grade sunlight/oil resistant jackets
- Suitable for use in IP67 or IP20 installations



Starting at
SKU: 63R3008.....**11.72**

Brad Industrial Ethernet RJ45 Connector

- 4A current rating per contact
- 250V voltage rating
- 20 to 80 degree C temperature rating



Starting at
SKU: 15M0233.....**14.27**

CAMDEN BOSS CamBlock Plus Terminal Blocks

- Low profile and standard profile
- Pluggable and rising clamp
- Double decker and triple decker



Starting at
SKU: 78Y6321.....**0.21**

TROMPETER RF connectivity TROMPETER RF Triaxial Cable

- Provides conversion between two different RF coaxial connector types
- Double braid shield, yellow, 36 AWG



Starting at
SKU: 96K5023.....**0.77**

EATON Crouse-Hinds Quick-Lok Pro Connectors

- Connect flexible metal wire & conduit to enclosures
- Used to connect armored-cable, metal cable, flexible metal conduit
- UL, cUL certified with easy tool-free installation



Starting at
SKU: 38X5699.....**1.75**

HUBBELL Power Entry Connector

- UL 4X, 6P watertight connector
- Nickel-plated brass contacts & SS hardware prevent corrosion
- Superior resistance to water ingress
- Patented Gotcha Ring provides unparalleled strain relief



Starting at
SKU: 46Y0179.....**33.25**

bulgin 4000 Series Circular Connectors

- IP66, IP68 and IP69K rated
- Plug and play capability
- Shielded system



Starting at
SKU: 75Y9755.....**6.02**

JOHNSON SMA High Frequency End Launch

- Self contained design-no external mounting screws
- Ideal for board substrate layers as thin as 8 mil
- Attaches directly to circuit board
- Frequencies up to 26.5 GHz



Starting at
SKU: 41K0121.....**5.44**

EATON Crouse-Hinds Liquidtight Conduit Fittings

- Liquidtight, oiltight rugged conduit fittings built for harsh applications
- The fittings are corrosion resistant and are able to be used in wet locations
- For use with nonmetallic, Type B liquidtight conduit



Starting at
SKU: 38X5615.....**1.72**

EDRAC Wire-to-Wire/Wire-to-Board 2.5mm Pitch Connectors

- IP67 waterproof
- 3A max rated current
- True crimp and poke solution



Starting at
SKU: 78Y9699.....**0.77**

HUBBELL Power Entry Plug

- UL 4X, 6P watertight plug
- Nickel-plated brass blades & SS hardware prevent corrosion
- Superior resistance to water ingress
- Patented Gotcha Ring provides unparalleled strain relief



Starting at
SKU: 46Y0182.....**22.28**

bulgin 6000 Series Circular Connectors

- IP66, IP68 and IP69K rated
- push/pull coupling mechanism
- Internationally recognized certifications: cULus, UL, VDE



Starting at
SKU: 56W4592.....**6.37**

JOHNSON MMCX RA Plug-MMCX RA Plug Cable Assembly

- RF / Coaxial RG178 Cable Assembly - 6" Grey
- Impedance: 50 ohm; MMCX right angle plug



Starting at
SKU: 41K0570.....**11.08**

EATON Crouse-Hinds Myers Hubs - Conduit Outlets

- Market leading solution for enclosure to conduit fittings
- Available in aluminum, zinc and stainless steel construction
- Can be used to terminate from 1/2 inch to 6 inch conduit - grounding option



Starting at
SKU: 38X5627.....**7.67**

HASTING HAN ES Press Inserts and Jumpers

- Bridge contacts by placing plug-in jumpers directly at the connector
- Compact design and construction makes troubleshooting easy
- Jumpers can be used directly on the insulation body



Starting at
SKU: 85Y2752.....**15.92**

HUBBELL USB Charger Receptacle

- High-power 5 Amp USB duplex
- One USB A port & one USB C port
- USB ports rated for 10,000 cycles
- Tamper resistant duplex



Starting at
SKU: 94Y4165.....**34.32**

ITT **Trident Circular Connectors**

- IP65/IP67 & RoHS compliant
- Interchangeable contacts between all series
- High strength metal or corrosion resistant plastic available in sizes 10-24



Starting at
SKU: 39P1522 **22.28**

MILMAX **2mm Pitch Spring Loaded Connectors**

- Modular contacts supplied in single and double row contact strips
- Low resistance, high-current contacts rated 2A continuous, 3A peak
- High-temp thermoplastic insulators suitable for wave and reflow processes



Starting at
SKU: 06AC5565 **4.64**

molex **EXTreme Guardian™ Power Connector System**

- 11.0mm pitch with 80.0A per blade
- Gold-plated terminals
- Fully isolated receptacle terminals and header blades



Starting at
SKU: 79Y6212 **1.36**

multicomp **D-Subminiature Connector Kits**

- Economical crimp or solder D-sub connector kits
- Kits for various shell sizes available
- Hoods are made of high-quality, chrome-plated plastic



Starting at
SKU: 64T2755 **5.00**

NORCOMP **QUIK-LOQ™ Metal Shell Push-Pull Connectors**

- Small, rugged precision design
- Ideal for applications where quick connect/disconnect is required
- 360 degree shielding for full EMI/RFI



Starting at
SKU: 03AC0945 **36.82**

ITT **D-Sub Connectors with Stainless Steel Shells**

- Intermateable to standard D-Sub connectors
- Max current/contact: 7.5A
- Meets JDEC standards for RoHS compliance



Starting at
SKU: 57R4963 **17.30**

molex **ValuSeal™ Wire-to-Wire Connector System**

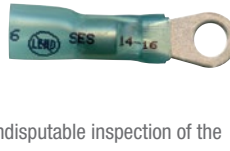
- IP65 rated, integrated wire-and-ring seal
- One piece housing design boosts efficiency by reducing number of components
- Enhances design flexibility in applications where space is limited



Starting at
SKU: 08AC3657 **1.12**

multicomp **Sealed Crystal Clear™ Connectors**

- Wire gauge imprint simplifies wire size identification
- Longer ring terminals provide ideal seal
- Insulation allows for indisputable inspection of the wire's condition



Starting at
SKU: 02AC5195 **15.06**

multicomp **Non-Stripping Multi-Connection Wire Connectors**

- IP33 water and dust resistant without the loss of electrical conductivity
- Types DI, I and T available for immediate delivery
- Accommodate all kinds of electric wires



Starting at
SKU: 78X4030 **0.41**

Qualtek **AC Power Inlets IEC 320 - C14**

- Screw mount, 0.250 Q.D. terminals
- Max Rating: UL and CSA 15A 250 VAC
- Max Rating: VDE 10A 250 VAC



Starting at
SKU: 17B6838 **0.46**

marathon **Enclosed Power Distribution Blocks**

- Flat panel mount or DIN rail mount versions available
- Choice of aluminum or copper connector material
- Mounts on panel or 35mm DIN Rail



Starting at
SKU: 86R9145 **33.26**

molex **Nano-Pitch I/O Interconnect System**

- High-bandwidth performance
- Industry-leading port density, multi-protocol application support
- Flexible pinout concept



Starting at
SKU: 79Y3539 **4.68**

multicomp **Non-Insulated Copper Tubular Lugs**

- A wide array of sizes available
- Non-Insulated
- Compression Lug



Starting at
SKU: 53X3327 **1.87**

NEUTRIK **Reversible USB 2.0 Gender Changer Adapter**

- Ideal for integration of computer based equipment into audio systems
- Dust and water resistant according to IP65 safety standard
- Universally accepted standard D shape housing



Starting at
SKU: 33K4278 **4.48**

SCHURTER **Waterproof Push/Pull Appliance Couplers**

- Push/pull locking system provides a strong, reliable connection
- Features a break-away cable in the event of overdue stress
- Protection degree IP67 and IP69K



Starting at
SKU: 02AC7179 **23.60**

Esterline **Circular Connector UTS Series Trim Trio™**

- Waterproof and sealed to IP68/69K dynamic conditions
- All rugged plastic construction with excellent impact and shock resistance
- Resistant to industrial-type fluids/oils and salt spray



Starting at
SKU: 84K9581 **7.98**

TE **CoolsplICE Large Wire Connectors**

- Allows for push button termination using a common pair of pliers
- Color coded termination buttons
- Clear body material for visual inspection of the termination



Starting at
SKU: 01AC4297 **0.79**

TE **FulliAXS Mini Connector Sealing System**

- Small enough to allow two-finger blind installs from any angle
- F1 rated UV protection
- Able to withstand a lightning strike up to 20kA at 10/350 micro sec



Starting at
SKU: 84Y6859 **76.61**

Weidmüller **PZ 10 HEX Crimping Tool**

- Crimp profile transfers the force evenly around the ferrule
- Round shape requires less hand force to perform a crimp
- Features an updated ergonomic orange and black handle design



Starting at
SKU: 26Y5051 **283.22**

3M **7700 Series - Round Conductor Flat Cable**

- 30 AWG solid conductor in polyolefin (PO) insulator,
- Laminated to flexible foil covering
- 95 Ohm impedance, cable which delivers up to 5 Gpbs over 1 meter
- Using the 3M™ wire-to-board system



Starting at
SKU: 25AC3154 **159.32**

Esterline **Metal Circular Connector UTO Series Trim Trio™**

- Waterproof and sealed to IP68/69K in mated conditions
- Ruggedized metal for applications where EMI shielding is desired
- Easy-to-mate 1/3-turn bayonet & audible click



Starting at
SKU: 84K9701 **21.09**

TE **SDE Micro Crimp Tool**

- Compact power with minimal effort
- Allows the operator to keep one hand free during the crimping process
- Includes 110 to 120V battery charger



Starting at
SKU: 46Y7611 **1260.34**

TE **SRB Series Power Entry Connectors**

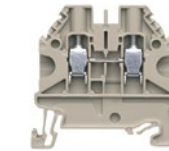
- Minimum depth IEC Inlet up to 20A
- One of the smallest footprints available
- Standard cutout dimensions



Starting at
SKU: 99Y0557 **4.16**

wieland **DIN Rail Mount IEC Screw Clamp Terminal Blocks**

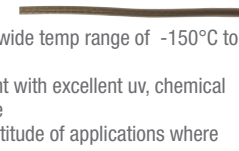
- Made with the thermoplastic (PA66) insulator housing
- Suitable for use with the mounting on TS 35
- UL94V-0 flammability rating



Starting at
SKU: 07X2403 **1.29**

AlphaWire **ThermoThin Ultra-Thin 600V High-Temp Hook-Up Wire**

- High-temperature performance with a wide temp range of -150°C to +300°C
- Small and lightweight with excellent uv, chemical and water resistance
- Well suited for a multitude of applications where space is at a premium
- Insulation: ECA fluoropolymer
- 1000 ft. continuous length available



Starting at
SKU: 22AC3362 **95.15**

Switchcraft **PC Tail Contact Nano-Mizer® M8 Connectors**

- Can be soldered directly to the PC Board
- Available with 3 or 4 contacts in a short or long connector size
- Made in the USA



Starting at
SKU: 99Y9042 **11.21**

TE **Power Key Connectors**

- Permit the release of bubbles created by the PCB potting process
- Prevent mis-mating with connectors available in various colors and keys
- Easily confirm contact insertion with a clear clicking sound



Starting at
SKU: 62W5747 **0.29**

WAGO **221 Series Levernuts**

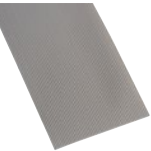
- Compact splicing for all wire types
- Minimize space
- Transparent housing
- Lower operating forces
- 20A current rating



Starting at
SKU: 71Y8326 **0.31**

3M **HF447 Series - Round Conductor Flat, LSHF Cable**

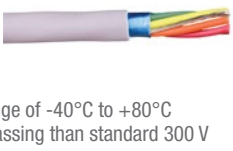
- Low smoke halogen-free (LSHF) cables for the low smoke zero halogen (LSZH)
- LSHF polyolefin blend insulation* for reduced risk to firefighters, and lower soot and corrosion damage to nearby equipment



Starting at
SKU: 25AC3106 **107.08**

AlphaWire **EcoCable® Mini 300V Communication Cable**

- EcoCable Mini is up to 32% smaller and 44% lighter than standard 300V PVC
- Broad temperature range of -40°C to +80°C
- Up to 92% lower outgassing than standard 300V PVC cables
- Suitable for use in NFPA 79 applications



Starting at
SKU: 86X1264 **155.70**

Amphenol® RF RF/Coaxial Cable Assembly

- BNC Straight Plug, Belden 179DT, 75 Ohm, 4GHz



Starting at
SKU: 11AC2539 **16.94**

multicomp UL Rated Power Cords

- UL rated
- SJ, SJT, SVT H05VV-F styles available
- Various cable lengths available for immediate shipment



Starting at
SKU: 74Y9217 **11.11**

TE Raychem High-Speed Digital Quad Cable

- IEEE 1394b quad cable silver-plated high-strength
- Stranded copper conductors - foamed FEP insulation with solid FEP filler.
- Spool of 2,500 ft.



Starting at
SKU: 16AC2252 **28074.75**

V V-Lock Locking Power Cord

- Best locking cord in the industry
- Hold at up to 50# pressure without unlocking



Starting at
SKU: 46M3025 **7.88**

BRADY BMP61 Magnet Accessory

- Package includes Printer Magnet Attachment only (printer sold separately)
- Designed for use with the BMP®61 Label Printer from Brady
- Allows printer to affix to panel door or metal surface for hands-free use



Starting at
SKU: 99Y7566 **25.00**

Amphenol® RF RF/Coaxial Cable Assembly

- BNC Straight Plug, Belden 4794R, 75 Ohm, 6"



Starting at
SKU: 18AC6960 **15.19**

SPACECRAFT COMPONENTS CORP. M85049 Termination Bands

- Features a secure locking system and easy termination
- Both flat and coiled termination bands available
- Cost-effective



Starting at
SKU: 68Y4518 **3.35**

TE 400R Rail Approved Cable & Wire

- Limited fire hazard wire & cable compliant NFPA 130-2010 standard
- Wire is approved on most USA rail projects
- Light weight, thin walled leading which reduces bundle volume



Starting at
SKU: 24AC4418 **26.12**

BRADY BMP61 Self-Laminating Vinyl Wire and Cable Labels

- Self-laminated format with white printable zone and overlam to protect text
- Durable, permanent acrylic adhesive has excellent water and oil resistance
- RoHS compliant to 2005/618/EC MCV amendment and UL approved



Starting at
SKU: 04H2707 **59.69**

BRADY BMP61 Label Printer with WiFi

- Industrial, rugged design and rubber bumpers that survive a 4 foot drop
- Prints on die-cut, continuous and custom label supplies up to 2" wide
- Simple to use color touch screen and QWERTY keypad for quick navigation
- Import and export label files or graphics with USB 2.0 port and flash drive



Starting at
SKU: 99Y7570 **775.00**

Global Connectivity USB Cable Assembly

- USB revision 1.0, 1.1, and 2.0 compliant
- Molded backshells provide durability at cable entry point
- Foil plus braid shield provides maximum protection against EMI/RFI



Starting at
SKU: 80Y1321 **12.98**

ETE Ethernet Industrial Networking CAT5E Cable

- 4-Pair, 100 OHM designed to meet demanding industrial environment needs
- Sold in spools of 1000ft (305m)



Starting at
SKU: 13AC3226 **2.79**

TRIPP-LITE USB Cable Assembly

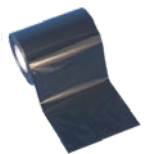
- Backwards compatible and can also be used with the older USB 1.1 cables
- Made with superior foil shielding for reliable data communications



Starting at
SKU: 17X0293 **5.48**

BRADY R4300 Label Printer Tape

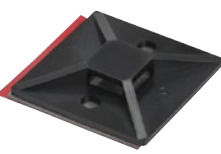
- One-color ribbon for printing a single color onto a label
- Strong environmental resistance against smearing and chemicals
- Recommended for printing on paper films that have matte or rough surfaces



Starting at
SKU: 90B9257 **150.89**

Hellemanntyton Extreme Duty Adhesive Cable Tie Mounts

- 3M™ VHB™ (very high bond) adhesive
- Adhesion on difficult materials & unaffected by vibration
- Predrilled holes extend mounting options and security



Starting at
SKU: 17AC5697 **70.86**

multicomp Woven Multifilament Cable Wrap

- Hook & loop closure - non-expandable cut-to-size sleeving
- Quick & easy, no need to disconnect existing cables, assemblies or bundles
- Reopens to permit inspection, maintenance, cable additions and removal



Starting at
SKU: 18AC8195 **131.17**

multicomp EMI Protective Tinned Copper Mesh Net Sleeving

- Lightweight mesh with excellent flexibility, making for easy installation
- Abrasion resistance & cut-to-length using scissors
- Used in a variety of industrial applications: rail, aerospace, etc.



Starting at
SKU: 18AC8251 **89.00**

multicomp PVC Reversible Button Cable Wrap

- Reversible design allows for choice of gray or black
- Reopens for inspection, maintenance, cable additions and removal
- Spool of 75



Starting at
SKU: 18AC8219 **192.61**

multicomp Woven Multifilament Zipper Cable Wrap

- Zipper allows for easy closure over cable bundles, harnesses, cords & hoses
- Tight weave construction provides dust resistance & cable protection
- 3.28 ft (1 meter) various diameters



Starting at
SKU: 31AC5912 **2.75**

PANDUIT Panduit Thermal transfer self-laminating label

- White colored print-on area label .25" for 18-14 AWG wires
- .75"x.75"long with a 3.0" core
- Package of 5000
- 5 labels per row



Starting at
SKU: 04M0099 **175.00**

multicomp Braided Cable Wrap

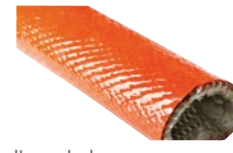
- Hook & loop closure durable polyester braided material
- Used in management of A/V cable and power cords for various applications
- Help create a tidy, well organized environment



Starting at
SKU: 18AC8202 **100.27**

multicomp Fireproof Sleeving for High Temperatures

- Special dense E-class fiberglass with self-extinguishing silicone coating
- Protects against exposure to extreme heat, open flame & molten splash
- Operating temperature -50° C to +500° C. Flammability rated: VW-1



Starting at
SKU: 18AC8258 **542.57**

multicomp Self-Closing Cable Wrap

- Lightweight and protects cables from wear due to abrasion
- Widely used in automotive, telecom, and railway industries
- Split open designs allows for easy installations without disassembling



Starting at
SKU: 18AC8299 **401.70**

multicomp Braided Cable Wrap with Zipper Closure

- Ideal use for office, railway applications, etc. for bundling
- Offers protection against flame and abrasion
- Zipper allows easy access for inspections, maintenance, add/removal
- 3.28 ft (1 meter) various diameters



Starting at
SKU: 31AC5918 **2.48**

PANDUIT PanTher LS8EQ Hand-Held Thermal Transfer Printer

- QWERTY keypad
- Continuous tapes, heat-shrink tubing, component labels, self-laminating
- Eliminating label waste and time associated with trimming labels
- Cut-to-length functionality



Starting at
SKU: 17T6030 **407.98**

multicomp Noise Reduction Braided Wrap

- Special structure reduces noise on wires, cables and hoses
- Side-entry design makes it easy to install, remove and reuse
- Provides tough, durable protection plus noise suppression



Starting at
SKU: 18AC8227 **454.90**

multicomp Insulating Fiberglass Sleeving

- Made of E-class fiberglass fabric coated with special silicon resin
- Resists high temperatures with heat resistance up to +200° C
- Excellent flexibility. Cut-to-size using cutting machine or scissors



Starting at
SKU: 18AC8278 **12.37**

multicomp EMI Shielding Woven Sleeving

- Woven copper foil & PET provides excellent electromagnetic protection
- Resistant to gasoline and engine chemicals; cut-to-size using scissors



Starting at
SKU: 22AC3309 **2010.84**

multicomp EMI Shielding Cable Wrap with Zipper Closure

- Provides excellent EMI shielding plus noise reduction
- Flame retardancy and abrasion resistance
- Maximum bundle diameter 10mm-16mm PE tinned copper mesh



Starting at
SKU: 31AC5923 **21.15**

PANDUIT Label, Ground Earth Identification

- Polyester, black on white
- Pack of 10



Starting at
SKU: 22C4826 **31.58**

PANDUIT® Panduit harness clip

- Winged push barb mount
- Secure and route standard sizes of solid and slit corrugated loom tubing
- Rugged clip prevents accidental disassembly of tubing due to shock



Starting at
SKU: 35C1246 **0.18**

PANDUIT® Panduit continuous heat shrink labels

- Military-grade polyolefin
- .13" diameter, 8' length, .25" width with range 22-18 AWG
- Fast loading P1 cassette



Starting at
SKU: 60M3742 **76.30**

PANDUIT® Pre-Printed Wire-Marker Book

- Vinyl-cloth. Marker color white, legend black



Starting at
SKU: 87F6093 **20.33**

Raychem Dual Wall Heat Shrink Tubing

- DWFR series - highly flame retardant 3:1 and 4:1 shrink ratios
- Insulates, environmentally seals and protects
- Provides excellent electrical insulation



Starting at
SKU: 01AC7672 **107.33**

Raychem Rayseal® Repair Sleeve Kit

- High heat, high-performance, heat-shrinkable wrap-around repair
- Adheres and seals for permanent, durable, reliable repairs
- Operating temperature range of -65°C to +260°C



Starting at
SKU: 18AC0923 **1092.32**

PANDUIT® Panduit swivel tie mount

- Weather resistant nylon 6.6
- Mechanical strength, heat and wear resistance
- Maximum stability for large diameter and heavy cable bundles



Starting at
SKU: 52K3189 **245.85**

PANDUIT® Panduit extra heavy cable tie mount

- Applied with #8 (M4) screw
- Weather resistant nylon 6.6
- Heat and weather, and stiffness in outdoor environments



Starting at
SKU: 70B4918 **91.15**

PANDUIT® PLT Series Pan Ty® Locking Cable Tie

- One-piece locking wedge for consistent performance and reliability
- Low thread force and high loop tensile strength
- Outdoor UV resistant
- 14.5"(368) length



Starting at
SKU: 90F3513 **121.95**

Raychem Single Wall Heat Shrink Tubing

- SWFR series - highly flame retardant 2:1 shrink ratio
- Environmentally friendly Zerohal non-halogen cross-linked polyolefin
- Offers mechanical protection from abrasion



Starting at
SKU: 02AC2298 **54.49**

Raychem Instalite® Lightweight Screening Sleeve

- LWB series - copper braid
- Up to 50% lighter than traditional copper braid
- Excellent flexibility and electrical shielding performance



Starting at
SKU: 22AC3338 **570.24**

PANDUIT® Panduit Metal tool with durable powder coat finish

- Installs standard, heavy-standard, light-heavy, & heavy cross section ties
- Tool controlled tension provides flush cut-off
- Easy to change tension adjustment and easy to operate
- Lightweight and balanced



Starting at
SKU: 58T6750 **435.57**

PANDUIT® Panduit Cable tie Tool

- Installs standard, heavy-standard, light-heavy, & heavy cross section ties
- Tool controlled tension provides flush cut-off
- Adjustable tension and ergonomic design



Starting at
SKU: 79Y3570 **366.97**

Raychem Instalite® Cable Bundle Sleeves

- Cable management with flexible fishnet construction
- Ideal for holding together open loom wire bundles
- Extremely lightweight and flexible, flame-retardant



Starting at
SKU: 01AC4281 **2.55**

Raychem Instalite® Heat Shrink Tubing

- Z-150 series - lightweight, high-temperature, Zerohal 2:1 shrink ratio
- Unique, lightweight cross-linked material - zero halogen
- Highly flexible and easy handling
- Fast installation



Starting at
SKU: 17AC8955 **646.38**

Heat-Shrink Identification Markers Sleeves

- D-SCE series fluid resistant - thermal transfer printable
- Formulated to use in harsh environments
- Provides strain relief, insulation and protection



Starting at
SKU: 43M1383 **2.90**

Amphenol NPA - Low Pressure Sensors
Advanced Sensors

- 2" & 5" H2O pressure ranges Differential or Gauge
- Amplified analog or I2C output
- Operating temperature range of -40 to 125°C
- Total error band ±1.5% FSO (5") ±2.5% (2")
- Burst Pressure 10 psi on 2"H2O & 15 psi on 5"H2O



Starting at
SKU: 76Y5941 **28.23**

RSF70 Series Liquid Flow Sensor

- Compact external fitting via compression seal
- Designed for fitting through a tank wall from the outside
- Device mountable with float to be able to move upwards away from the body



Starting at
SKU: 99B1525 **17.68**

Grayhill Series 68P Long Life Encoder

- Ratiometric analog output
- Debris resistant Hall Effect sensor technology
- 3 million rotational cycles
- Single or redundant output



Starting at
SKU: 66Y6606 **45.79**

NEWPORT® Ready-Made Thermocouples with Molded Connector

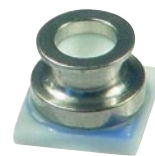
- Sold in packs of 5
- Made from special limits of error wire
- 1 and 2 meter (36 and 72") lengths standard
- Molded subminiature connector with integral strain relief/spool



Starting at
SKU: 30M9423 **59.00**

MS5837 Ultra-Small Gel Filled Pressure Sensor

- Optimized for altimeter and barometer applications
- Allows the user to optimize for conversion speed and current consumption.
- Allows the implementation of added functions without an additional sensor
- The communication protocol is simple



Starting at
SKU: 06AC0736 **10.35**

SLSP Series Safety Light Screens

- Provides point-of-operation, area, access and perimeter safeguarding
- Protects personnel from injury and equipment from damage
- Offered with 14 and 30 mm resolution
- Requires no controller



Starting at
SKU: 30K6997 **2,189.80**

EATON E57G General Purpose Proximity Sensors

- Designed for most standard inductive sensing needs
- With its stainless steel tubular body, 360 degree visible LED
- E57G series is an ideal cost-effective solution
- 360 degree visible LED, fast switching speed and laser-etched markings



Starting at
SKU: 45Y9947 **38.99**

Honeywell Heavy Duty Pressure Transducers PX3 Series

- Most comprehensive indication of the sensor's true measurement performance
- Multiple configuration possibilities
- Fully calibrated and temperature compensated
- Helps to reduce energy costs and enhances product life



Starting at
SKU: 06AC2807 **28.84**

OMRON Distance-Settable Photoelectric Sensor E3S-CL

- Simply set the distance to reliably detect workpieces of various colors
- Reliable detection regardless of color or material
- Long sensing distance of 500 mm
- Eliminates background influence
- Metal body with IP67 protection



Starting at
SKU: 90B5523 **409.01**

XCKL Series Limit Switch

- Positive opening snap action contacts for simpler and safer machine design
- Positive opening on all snap and slow-break contacts, for safer machinery
- Modular design for easier maintenance
- For OEMs and end users in vast number of applications
- Uses Zigbee protocol for best in class communication performance



Starting at
SKU: 96F1934 **62.53**

Proximity Sensors Capacitive Type CA18CAN

- Features improved 4th Generation TRIPLES-IELD® technology
- Adjustable sensing distance: 2-10 mm flush or 3-15 mm non-flush
- Protection: short-circuit, transients and reverse polarity



Starting at
SKU: 45Y0741 **133.00**

Flow Rate Monitoring – RFO Type

- Accurate flow rate output with integral visual confirmation
- Unprecedented price/performance ratio
- Feature a VDC pulsed output



Starting at
SKU: 92C8701 **107.88**

SPD Sensor with Cable Extender

- Fits in small spaces and mounts in just about any direction
- Body sealed against IP67 (wet) environments
- Infinite resolution
- High-value and economical price



Starting at
SKU: 68X3267 **407.83**

Panasonic PIR Motion Sensor

- High-sensitive human detection sensor with built-in amp
- Simplified circuitry with fully integrated circuit design
- Excellent resistance to electromagnetic noise
- Reduced development and design schedule
- Super low-current consumption



Starting at
SKU: 26T3947 **7.81**

Hall-Effect Speed Sensors

- Hall Effect devices used in applications with near zero speed sensing
- From near zero speed up to 15 kHz sensing capability
- Automatically adjusting magnetic range with self-compensating to target



Starting at
SKU: 04M6088 **39.52**

ABB Compact Range Push Button Switch

- Most efficient solution reducing both installation time and cost
- Perfect for tough environment IP69 rated
- Compact size with only 42 mm (1.65 in) depth



Starting at
SKU: 14AC1022 **9.98**

E-SWITCH ULV4 Series Anti-Vandal Switch

- Long operating life
- IP67 rated
- Multiple illumination voltage options



Starting at
SKU: 52Y1809 **19.42**

Grayhill 51P22 Series 1-Deck Rotary Switch

- Positive shaft grounding for EMI/RFI shielding
- Stainless steel shaft, stop blades and nickel-plated steel detent balls
- Designed for a wide range of Industrial applications



Starting at
SKU: 94F6662 **14.36**

multicomp CPTF-V Micro-Miniature Tactile Switch

- Quality at a value price
- Made of nylon high temperature thermoplastic base stainless steel cover
- Silver-plated Brass Terminal



Starting at
SKU: 31M5586 **0.38**

SAFRAN Econoswitch Sealed Toggle Switches

- Industrial - environmentally sealed switches
- One hole mounting for easy installation
- 2/3 position Zith maintained and momentary action



Starting at
SKU: 50F1565 **11.65**

APEM Microswitch Joystick

- Ideal choice for single step switching applications
- Supplied with a comfortable knob and improved construction
- Designed for sub panel mounting



Starting at
SKU: 98K5262 **10.34**

e a o Illuminated Pushbutton

- Maintained action green-illuminated pushbutton switch
- IP67 protection rating
- Flush design mounting
- Stainless steel lens material



Starting at
SKU: 38X7180 **11.73**

Honeywell 914CE Snap-Action Small Precision Limit Switch

- Rugged die-cast zinc housing for demanding environments
- Compact construction for minimal real estate on equipment
- Gang mounting capability to provide a multi-plunger limit switch



Starting at
SKU: 05M3051 **88.50**

NIKK Series SK Security Keylock switches

- Easy panel cutout prep and high density mounting
- Epoxy sealed terminals
- Short behind plate depth
- Accurate switch setting



Starting at
SKU: 10X9220 **11.10**

Life Is On Schneider Electric XCSDMC Series Safety Interlock Switch

- IP67 protection rating
- Use with the Preventa safety detection range of products
- Compact rectangular interlock switch
- Meets the EN/IEC 60204-1, EN/IEC 60947-5-1, EN/ISO 12100 standards



Starting at
SKU: 72K1479 **117.48**

Coffing Technologies The R-Series Corvette Snap-In Rocker Switches

- Esthetically pleasing switches compatible with standard panel cutouts
- Electrical ratings up to 16 AMPS
- Compatible with a range of standard panel cutouts



Starting at
SKU: 01C4737 **1.57**

EATON C22 Compact Pushbutton

- Functional, attractive, and ergonomically designed "all-in-one" pushbuttons
- Rated for 5 million mechanical operations
- Lenses specifically designed for LED illumination
- IP69K for wash-down environment



Starting at
SKU: 44T9672 **23.17**

IDEC TW Series — 22mm NEMA Style E STOP Switch

- Corrosion resistant octagonal chrome plated locking bezel
- Slow make, double break, self-cleaning contacts
- Is durable, easy to use, and versatile
- Wide current rating, 5mA to 10A



Starting at
SKU: 74K3693 **35.26**

OMRON General-Purpose Basic Switch

- Capable of handling 20A loads with large inrush currents
- Self-reset type
- 0.5m contact gap



Starting at
SKU: 22C7680 **14.19**

Alcoswitch Anti-Vandal Switch Series

- Designed for security and reliability in industrial applications
- Switches are sealed to IP67
- Easy user interface and LED indicators



Starting at
SKU: 84Y5562 **10.19**

ABB AF30-30-00-11 Contactor

- Used for controlling power circuits up to 690 VAC and 220 VDC
- Have built-in surge protection not requiring additional surge suppressors
- One coil can be used for different control voltages
- Can manage large control voltage variations



Starting at
SKU: 60Y3662 **93.10**

CROUZET DIN RAIL Phase Monitoring Relay

- Overvoltage and undervoltage between phases
- Controls its own supply voltage
- LED status indication



Starting at
SKU: 58T0810 **126.81**

EATON XTCE IEC Contactor

- Non-reversing and reversing contactors
- Compact, space saving, and easy-to-install
- Efficient and effective solution for customer applications from 7A to 2000A
- IP20 finger and back-of-hand proof



Starting at
SKU: 51M9137 **84.16**

MACROMATIC PMPU - Phase Monitoring Relay

- Continuously monitor all voltages of a three-phase system.
- Protects against phase loss, phase reversal, phase unbalance
- Continue to function even with a lost phase



Starting at
SKU: 29M9956 **99.13**

Panasonic RJ Relays (ARJ) Power Relays

- Excellent high-frequency characteristics
- 8 GHz max. capable
- Small size



Starting at
SKU: 02E9085 **126.83**

Solid State Relays Industrial, 3-Phase ZS Type RZ3

- Built-in varistor secures transient protection for heavy industrial applications
- Higher reliability and load cycle capability
- Over-temperature protection option with alarm output
- Integral snubber network



Starting at
SKU: 17M9318 **290.00**

crydom DRA1 MP Series DIN RAIL Mount SSR

- 10mm single channel DIN rail mount SSR assembly
- Cage style screw terminals for easy connection
- Fits standard 35mm DIN rail



Starting at
SKU: 57R4102 **44.51**

finder 80 Series Modular Timers

- Multi-function and mono-function timer range
- New multi-voltage versions with "PWM clever" technology
- Six time scales from 0.1 s to 24 h
- High input/output isolation



Starting at
SKU: 08X7285 **41.18**

OMRON MOS FET Relays G3VM

- World's smallest new VSON package
- Low output capacitance and low ON resistance
- -40 to 85°C Operating temperature range



Starting at
SKU: 29Y9190 **6.18**

Telemecanique Sensors 841 Current Sensing Relay

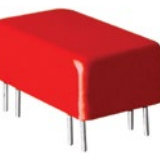
- Complete current sensing solution in one DIN rail modular package
- Monitor the current of one circuit (1 to 8 amps) and switch another circuit
- Offers a "one stop solution" for your power management system



Starting at
SKU: 30M2660 **41.27**

OTO Technology 2900 Series Reed Relays

- Very small high-reliability reed relays
- High-speed switching compared to electromechanical relays
- Epoxy coated steel shell provides magnetic shielding
- Hermetically sealed contacts for long life



Starting at
SKU: 67K1689 **12.87**

DURAKOOL SRA1 Solid-State Relay

- High load voltage - up to 480VAC
- Zero cross-over or random switching
- Finger protected terminals
- LED input indicator



Starting at
SKU: 11AC0399 **21.38**

IDEC RH Series — General Purpose Midget Relays

- Compact midget size saves space
- High switching capacity (10A)
- Relay options include indicator light, check button, and mounting bracket



Starting at
SKU: 66M8461 **6.04**

OMRON Safety Monitoring Relays SR1

- Detects the stop condition of all types of AC or DC motors
- Function with electronic motor control devices
- Outputs are switched when motor speed reaches the adjustable preset limit



Starting at
SKU: 74Y6352 **534.60**

TE FC-325 Series Relays

- Hermetically sealed devices designed for harsh inductive load applications
- Shares the load across two contact sets
- All welded enclosure
- MS27418 qualification
- Double make/break contact design



Starting at
SKU: 84Y8955 **748.13**

ABB PSR Series Soft Start

- Built-in bypass saves energy and space while reducing heat generation
- Keep your motor protected from load and network irregularities
- Reduce energy consumption and heat generation with motors at full speed



Starting at
SKU: 63Y4122 **246.64**

EATON DA1 Variable Frequency Drives

- Next generation of drives specifically engineered for today's applications
- High-performance processor, safe torque off, multiple fieldbus protocols
- Compact, space-saving design
- Side-by-side installation
- Rugged and reliable—200% for 4 s 50 °C rated



Starting at
SKU: 81Y2341 **986.72**

OMRON E5 Digital Temperature Controller

- Large white PV display that's easier to read
- Easy to use, from model selection to setup and operation
- Mount to DIN track and are ideal for HMI/PLC connections
- Programmable models to support a wider range of applications



Starting at
SKU: 05W3885 **223.23**

Schneider Electric 3 Pole 63A UL98 Disconnect Switch Din Rail mount

- Compact switch for disconnects inside control panel
- Wide range of accessories including handles, shafts, auxiliary contacts etc
- Designed for perfect integration in control systems
- Global approvals- UL, CSA
- Extremely durable and can be used in the most demanding applications



Starting at
SKU: 17AC4922 **89.30**

EATON FAZ Series Thermal Magnetic Circuit Breaker

- UL 489 listed DIN rail mounted miniature circuit breakers
- Ideal for switchgear for industrial and advanced commercial applications
- Current-limiting design provides fast short-circuit interruption
- Trip-free design



Starting at
SKU: 78X4769 **24.31**

ADVANTECH ADAM-6520 Series Industrial Ethernet Switches

- Solid industrial-grade design assures reliable operation in the application
- Supports full/half duplex flow control
- Each port has a pair of LEDs that indicate link status and port activities
- Embedded with a switch controller, supports auto-negotiation



Starting at
SKU: 34M3188 **125.00**

IDEC FS1A Safety Controller

- No programming needed configuration completes by turning on a logic switch
- Partial/entire stop can be achieved just by selecting a logic
- One SafetyOne module can connect with various inputs



Starting at
SKU: 73R5182 **526.82**

OPTO 22 Digital I/O for Raspberry Pi Starter Kit

- Perfect for prototyping and proofs of concept
- Provides reliable way to sense and switch industrial level electrical loads
- Includes carrier board, mounting rack, and four popular G4 I/O modules



Starting at
SKU: 06AC3382 **124.00**

Corning Technologies G-Series DIN Rail Mount Circuit Breaker

- Single pole, black handle actuator with dual legend imprinting
- 50 Amps, 80 VDC
- UL 489 listed
- Accommodates either 35mm x 7.5mm or 35mm x 15mm symmetrical DIN rails



Starting at
SKU: 12AC5765 **34.00**

EATON Compact High-Speed Fuse

- Protects semiconductor devices up to 500VAC/dc
- Smaller package without compromising heat rise performance
- Superior current cycling performance helps withstand demanding applications



Starting at
SKU: 72Y2097 **49.89**

CROUZET em4 Alert Controller

- Connect your equipment to the GPRS network worldwide
- Get an alert by SMS or email fully controlled by the application program
- Adapt your application along the way of its lifecycle
- Receive data reports by SMS



Starting at
SKU: 94Y9639 **727.02**

NEWPORT Temperature, Process, Strain PID Controller

- High-performance (20 samples/sec)
- High accuracy
- Extremely versatile yet easy and intuitive to use
- Full autotune PID with fuzzy logic adaptive control
- USB communications standard on every model



Starting at
SKU: 44Y9435 **295.00**

Schneider Electric 3 Pole 16A UL508 Disconnect Switch Din Rail mount

- Compact switch for motor disconnect
- Wide range of accessories including handles, shafts, auxiliary contacts etc
- Unique accessories like fuse holders, line changeover kit available
- Global approvals- UL, CSA
- Extremely durable and can be used in the most demanding applications



Starting at
SKU: 17AC4913 **31.82**

EATON JG Series Molded Case Circuit Breaker

- Features field-fit accessories
- Space saving footprint
- High-performance current limiting designs



Starting at
SKU: 51K1727 **940.69**

SCHAFFNER FN9260 General Purpose IEC Inlet Filter with Fuses

- Rated currents up to 10 Amps
- For one or two fuses
- Optional safety versions (A type)
- Optional medical versions (B style)
- Complies with IEC/EN60601-1



Starting at
SKU: 52F9095 **10.10**

Schneider Electric PowerPact B 125A Molded Case Circuit Breaker

- 125A circuit breaker with patented EverLink™ connections
- Wide range of accessories and lug options
- Integrated DIN Rail mounting included on all unit mount circuit breakers
- Unique I-Line™ version mounts into Square D™ panelboards & switchboards



Starting at
SKU: 16AC9004 **607.18**

TRIPP-LITE Ultra-Compact Line-Interactive 550VA/300W UPS

- Corrects brownouts and overvoltages from 83V to 147V
- 4 battery supported outlets, 4 surge-only outlets
- 5.5 minutes runtime at 50% load (150 watts)
- USB port, TEL/DSL protection, wall mountable, 98% efficient



Starting at
SKU: 85K8838 **94.58**

SOLAHD Uninterruptible Power Supply 500VA

- Communications port for optional Industrial Ethernet protocols
- Lightweight, compact industrial design
- Wide operation temperature range (0 °C to 50 °C)
- Cold start capability
- USB communication port



Starting at
SKU: 11AC9460 **340.32**

TDK-Lambda RWS1500B24 - Power Supply, 1.5 kW, 12 V, 125 A

- Cost effective
- 7-year warranty
- Compact size



Starting at
SKU: 13AC1791 **472.00**

Weidmüller Weidmuller Veritector PU II UL Series

- Protects against surge damage, meets latest certification standards
- Installation-ready modules for mains systems
- SPD according to UL 1449
- Insert can be rotated through 180°
- Coded voltage level, pluggable arrester



Starting at
SKU: 02AC4602 **153.18**

Schneider Electric Multi 9 - New Miniature Circuit Breakers

- For OEMs and control panel builders
- Branch and supplementary protection, DC ratings, ground fault & accessories
- Optimized design with increased performances and smaller footprint (4.05in)
- Multiple certifications (UL, IEC, CSA, CCC...) and worldwide availability
- A single part number for 240V and 480Y/277V



Starting at
SKU: 25AC3448 **114.00**

RECOM 240 Watt AC/DC DIN-Rail Power Supply

- Universal input range (85-246VAC) / active PFC
- UL/IEC/EN 60950 certified - UL 508 listed
- 5-year warranty



Starting at
SKU: 01AC3193 **105.52**

SOLAHD AC/DC DIN Rail Power Supply

- Universal Input
- Convection cooling
- Protection against short circuit, over voltage, overload, and overheating
- DC OK LED
- 2-year warranty



Starting at
SKU: 77Y8478 **41.13**

TRIAD Toroidal Transformer

- Efficient, compact, cool running and cost effective
- Available in sizes ranging from 25VA to 2,500 VA.
- These toroids have minimal stray fields for quiet operation
- CE IEC 61558-1 & CE IEC 6158-2-6, Class B Insulation (130C)



Starting at
SKU: 11R8053 **63.86**

XP Power 225 Watt IT & Medical PSU, 1U Profile

- Low 1.18" U channel profile with 3.12 x 5.0" footprint
- 150 W convection cooled or 225 W forced cooled ratings
- Very high efficiency up to 95% and <0.5W no load input power



Starting at
SKU: 06AC2645 **108.36**

TE Corcom W Series Power Line RFI Filter

- Designed for use when equipment impedance at RF frequencies is high
- Two stage construction provides excellent suppression at high frequencies
- Offers an N = 4 line-to-ground impedance for common mode



Starting at
SKU: 52K4496 **22.79**

Stamper Split Core Current Transformer

- 100/5
- System voltage is 720V maximum, test voltage is 3kV for 1 minute
- System frequency is 50 to 60 Hz
- Overload withstand is 1.2 times rated current continuously



Starting at
SKU: 99Y7726 **109.29**

TDK-Lambda RWS1000B24 - Power Supply, 1 kW, 24 V, 42 A

- Cost effective
- 7-year warranty
- Compact size



Starting at
SKU: 13AC1788 **343.00**

TRIAD Chassis Mount Quick Connect Transformers

- Designed for higher power - up to 175 VA.
- Dual bobbin and constructed with UL approved high-temperature material
- Primary and secondary are both electrically isolated from each other
- CSA, IEC, TUV & UL approved.



Starting at
SKU: 79K0018 **9.73**

XP Power 30/50/70 Watt Slim Line DIN Rail Power Supplies

- Wide operating temperature range from -25C to +70C
- 5, 12, 24 or 48 VDC output with wide adjustment range
- High efficiency up to 89%
- From only 0.89" wide
- Universal 85-264 VAC input



Starting at
SKU: 14AC2515 **41.16**

ebmpapst K3G200 Series 200mm EC Diagonal Compact Fans

- Plug & play, can be installed for both airflow directions
- Innovative diagonal impeller drives uniform airflow
- GreenTech® EC motor maximizes energy savings



Starting at
SKU: 01AC7472 **234.59**

Hoffman HF Side-Mount Filter Fan

- UL listed Type 12 enclosure filter fan
- Tool Less installation and maintenance
- Hinged grille reams attached after opening
- Click fit easy installation



Starting at
SKU: 98Y5633 **92.24**

NMB Refrigeration Cooling Fans

- Designed for colder environments and higher humidity applications
- Feature a fully integrated motor, casing, and impeller design



Starting at
SKU: 22AC3588 **19.61**

SANYO DENKI IP68 Splash Proof Long Life Fans

- IP68 rated water and dust resistance
- Long life 150K hours (17 years) @ 60C for extra rugged equipments
- High airflow and high static pressure
- Stiff metal frame for shock damage resistance



Starting at
SKU: 51Y4106 **86.24**

MARIL 677 Series, Sealed LED Panel Indicator, Grn 28Vdc

- Ø8.1mm mounting hole. Other LED colors and voltages available. Smoked lens
- IP67 sealed, vibration and vandal resistant. Internal & external projects
- Ideal for defense, industrial and harsh environments



Starting at
SKU: 35C0937 **24.89**

ebmpapst 420J Series DC Axial Fans

- 40x40x28mm high performance compact fan
- Durable and highly efficient
- Noise optimized for quiet operation
- Optional IP68 protection available



Starting at
SKU: 26Y9208 **24.00**

multicomp Fan Filter Guard Grille

- Made of C1008 steel with bright nickel chrome finish
- Ideal for use with 60MM axial fans



Starting at
SKU: 56P2972 **0.42**

NMB IP69K Axial Fans

- Water resistant
- High-performance
- Durability
- Longer Life



Starting at
SKU: 99Y7375 **10.09**

EATON SL Series Stacklight

- Simplified twist-and-lock assembly, no tools required
- Compact components reduce inventory requirements and increase flexibility
- Versatile hardware for quick installation and minimized downtime
- Compact components reduce inventory requirements and increase flexibility



Starting at
SKU: 67X5736 **177.96**

muRata DMR20-0/5 Series Process Monitors

- 0-5V input process monitors designed to fit 1.21 inch round panel cutouts
- Large, easy-to-read, 0.30 inch digits
- Can be operated from any regulated source of 5V, 12V, 24V, or 36V DC power



Starting at
SKU: 16AC3615 **64.68**

ebmpapst IP68 Rated Fans for Harsh Environments

- DC centrifugal and tubeaxial fans ranging from 60mm to 190mm
- Optimal and reliable performance in the toughest conditions
- Fully encapsulated for protection against dust and water



Starting at
SKU: 41Y1538 **38.30**

multicomp 119 x 38.5 mm Axial Fan

- Features 2 ball bearings and push-on terminal power connection
- 2750/3050RPM ±10% speed rating
- -10 to 70°C operating temperature range
- Impedance protected



Starting at
SKU: 70K8565 **11.89**

SANYO DENKI Wide Temperature Range Fan

- Industry leading operating temperature range of -40°C to +85°C
- Safe to be used in both low-temperature and high-temperature applications
- Stiff metal frame for shock damage resistance
- More than double the L10 life of standard fans (40,000 hours @ 85C)



Starting at
SKU: 38Y6387 **61.35**

LASCAR PanelPilot Ace

- Build multi-screen interfaces without needing to write a line of code
- Works with the free drag-and-drop style program PanelPilotACE Design Studio
- Capacitive touch-screen



Starting at
SKU: 54X1821 **264.00**

redipon CUB5 8-Digit Dual Counter And Rate Indicator

- Provides ultimate flexibility with complete user programming
- Optional relay output module
- Programmable as a single or dual counter with rate indication capability
- Backlight display with 0.46" digits



Starting at
SKU: 84K7434 **127.00**

Simpson Hawk 3 Advanced Digital Panel Meter/Controller

- Optional one, two, or four 5 amp relays
- Activated set point indicators on display
- Easy to understand programming menu, 16 point scaling linearization
- Screw terminals for easy installation
- Limit switch and password lockout



Starting at
SKU: 02M2070 **336.77**

VCC FlexVolt PML50 Series Panel Mount Indicator

- Offers daytime visibility, easy installation in harsh environments
- Flex voltage (5 VDC to 28 VDC) designed for application flexibility
- For panel hole diameter: 0.688" (17.5mm)
- Clear transparent lenses and high brightness



Starting at
SKU: 14AC6156 **7.50**

BUD Inexpensive Hinged ABS NEMA 4x/IP66 Enclosure

- Designed to meet NEMA 1, 2, 4 and 4x as well as IP66
- 23 sizes available with clear and opaque lids in indoor or outdoor versions
- All plastic construction including hinge pins
- Comes complete with stainless steel wall mounting brackets



Starting at
SKU: 73R7991 **16.84**

HARCON MANUFACTURING NEMA 3R, 4 & 12 Rated Steel - Wall Mount Enclosure

- CSA & UL508 listed for NEMA 3R, 4 & 12
- 16 ga. steel construction & hinged door with seamless poured gasket
- Smooth gray powder paint - inside and out



Starting at
SKU: 16F1944 **150.02**

Hoffman POLYPRO Polyester Enclosure

- Performs well in harsh environments
- Superior UV performance
- Better impact resistance than fiberglass and lighter as well
- UL type 4X, UL 508A



Starting at
SKU: 75M3789 **99.94**

Simpson Amik Digital Three Phase Power Meter

- User selectable CT secondary 1A/5A
- Wide auxiliary power supply: any input between 40V-30V AC/DC
- Storage of min/max values
- Measures and display of RPM, run hours, on hours and number of interrupts
- User selectable AC power inputs



Starting at
SKU: 70Y5476 **225.40**

YOKOGAWA Horizon Line Analog Panel Meter

- Newark still has deep inventory of Yokogawa meters
- AC ammeter, transformer rated, iron vane
- Severe duty meter meets UL 1437 requirements
- Taut band instrument



Starting at
SKU: 95W5645 **34.31**

FIBOX Instrument Protection Window / HMI Cover

- Maintains dust-free environment
- Provides secure access with multiple locking options
- Fully UL Listed NEMA 4X, IPW offers secure access to HMI's and components
- Quick and easy installation on any underlining enclosure
- Protect your investment without delay



Starting at
SKU: 06AC3032 **139.66**

HARCON MANUFACTURING NEMA 4X, IP66 Rated Diecast Aluminum Enclosure

- cUL & UL508 listed for NEMA 4X
- Thick wall diecast aluminum construction with stainless steel hardware
- Two piece "tongue & groove" construction, one piece silicone rubber gasket



Starting at
SKU: 87F2510 **22.04**

STEREO KTS 011 Small Thermostat

- (NO): Thermostat closes on temperature rise
- Comes with blue temperature dial
- DIN rail mountable



Starting at
SKU: 02P6314 **20.47**

TEXMATE DU Series Meter

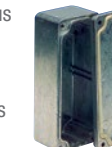
- Economical, low DC voltage measuring meter
- Three header selectable full scale ranges of 50mV, 100 mV, and 200 mV
- High efficiency red LED display
- User selectable AC power inputs



Starting at
SKU: 22AC8974 **115.00**

BUD Inexpensive IP68 NEMA 4 Die Cast Enclosure

- Rugged, lightweight with continuous silicone gasket
- Meets IP 68 and NEMA 4 and 6 as well as other ratings
- Easily modified with holes and slots by Bud and Newark in 5 days
- 24 sizes and black powder coated available



Starting at
SKU: 72Y0535 **10.02**

FIBOX The Largest Polycarbonate Enclosure Available

- Innovative, cost-effective, lightweight
- UL listed, NEMA 4x, and impact resistant
- Superior corrosion and UV protection for longer useful life
- Big enclosure – small cost – big savings
- Contact Newark for additional sizes



Starting at
SKU: 06AC3057 **236.92**

Hoffman QLINE™ D Polycarbonate Enclosure

- Body is impact-resistant polycarbonate
- Seal rating of IP67
- Straight side walls permit ganging of multiple enclosures
- Halogen free



Starting at
SKU: 06B9663 **46.06**

vynckier Small Drain Vent

- 2 pieces
- Made of polyamide
- Suitable for use with non-metallic enclosures



Starting at
SKU: 73P7200 **5.25**



element14

PSRST STD
U.S. POSTAGE
PAID
Newark

300 S. Riverside Plaza, Suite 2200
Chicago, Illinois 60606

Stockroom Solutions: Call 1-800-463-9275 to schedule a free demo today!

Newark element14 can help you manage inventory and order fulfillment by providing the best price options, reduced inventory costs and streamlined information management. Learn more at newark.com/stockroom-solutions



element14

Industrial Automation Products & Solutions

element14

Expanding our inventory, so you can find more of what you need!

EAT•N

Find Every Part You Need to Design Your Industrial Control Panel



Browse our extensive range of rugged, reliable real-world solutions for harsh environments.

i•Buy

Achieve complete spend control with our FREE eProcurement tool, iBuy.